



Welcome to Lethbridge Primary School





‘Live, learn, achieve’



I am very proud to be able to share with you the wonderful opportunities at Lethbridge Primary School.

Lethbridge Primary School is a vibrant and caring school where children are enthusiastic and motivated to achieve endless possibilities. The children are at the heart of every decision we make to ensure that they are happy, confident and that the opportunities that are provided for them are relevant to their needs both now and in the future.

At Lethbridge, we believe that children should be curious about their learning and at the centre of our decision making. Through our engaging curriculum, we ensure that children can foster a passion for learning that will help to develop high aspirations and a lifetime of memories. We believe in ensuring that children receive a well-rounded curriculum, where individual talents can be spotted and nurtured to ensure that all children experience success and reach their full potential. We believe in providing opportunities for children to develop characteristics for effective learning and life.

The school has a dedicated staff team that works hard to reach high standards in everything we do and this is further embedded through our successful relationships with families and the wider Old Town community and evident in our children’s very high standards of attainment. We firmly believe that education is a partnership between home and school and regard you as an active partner in your child’s education and value your interest and support.

Lethbridge Primary is a very special place where children are valued, cared for and inspired.


Lisa Mayes – Head Teacher

'Live, learn, achieve'



Keep up to date with the latest Lethbridge news. Check out our Website and Twitter feed

Translate using Google: [Select Language](#)



Welcome to our web site on Wednesday, May 13th 2020

Do you have a child starting at our school in September?
[Information for New Starters 2020](#)

Video Challenges: [updated 08th May Inc: Quiz Club](#) **Picture in My Window:** [11th May Kites updated 10th May](#)
Challenge Feedback: [updated 11th May](#) **Learning at Home:** [updated 7th May](#)

Headteacher Welcome
 Welcome to our school website. We hope that you enjoy finding out all about our fantastic school.
[Read more here](#)


Overall Ofsted Judgement June 2017: Good.
 "You have open lines of communication with parents and an evident commitment to ensuring that their children achieve their best. This means that parents are sure any concerns will be listened to and firmly believe the school is well led and managed. The overwhelming majority would recommend the school to another parent."

Dates: 2019-20 dates **Newsletters:** March 2020

Class Pages 2019 - 2020

Early Years Foundation Stage					
3CS/JK	3MR/WC	4DT	4GB	5TM	5CH/KK
1NS	1HF/CB	1-2LP	2KH	2HR/BL	6CC
6KW					


Other additions: 6th April 2020
[Term 5 Values, Responsibility](#)
[Learning at Home/ School Closure Information](#)
[Primary Environmental Review 2019-2020](#)
[Term 6 holiday dates 2019-20](#)
[Times Tables advice for parents](#)
[High Frequency Word Lists now available](#)
 We are pleased to be working with the Royal Ballet School



Lethbridge Primary School Twitter feed
[Follow @lethbridgepri](#) 292 followers

Lethbridge Primary
 @lethbridgepri
 Couldn't agree more. No one reads a children's story like Neil!
https://twitter.com/AMCPS_Swindon/status/1260162743041875995

[Quiz Club online quizzes](#)



ParentMail ParentMail Parent Log in
Parent View Give Ofsted your view on Lethbridge

We've raised £1,364.74 with easyfundraising. Help us raise funds! Easy Fundraising

ParentMail ParentMail Parent Log in
Think Know Think U Know
Parent View Give Ofsted your view on Lethbridge

Lethbridge Primary School Lethbridge Road SWINDON Wiltshire SN1 4BY
 Telephone: 01793 530533 Email: admin@lethbridgeprimary.co.uk

Lethbridge Primary School is a charitable company limited by guarantee registered in England and Wales. Registered number: 7685652.
 Registered office: Lethbridge Primary School, Lethbridge Road, SWINDON, Wiltshire SN1 4BY




Lethbridge Primary
 @LethbridgePri

Lethbridge Primary School

Swindon, England lethbridgeprimary.co.uk Joined March 2016

24 Following 292 Followers

Tweets Tweets & replies Media Likes

Lethbridge Primary @LethbridgePri · 22h
 Couldn't agree more. No one reads a children's story like Neil!

AMCPS-Swindon @AMCPS_Swindon · 23h
 We are delighted that Neil is properly on the mend now. He is such a wonderful and generous member of @AMCPS_Swindon and @bluekitrust communities. We look forward to seeing you again soon Neil.

Paperwork



- Please make sure all registration forms are completed and handed into the office.
- Please ensure we have up-to-date emergency contact numbers and emails.
- Please be aware that we will also ask to see and copy your child's birth certificate before the end of Term 1.

Towards the end of July please look out for an email from 'Parentmail' and inviting you to register. Parentmail is our main way of communicating to parents and it is very important you respond to the email, so you don't miss any communications. We also suggest that you download the Parentmail App so that messages appear on your mobile phone, so there is no delay in you receiving communications.

Early Years at Lethbridge



EYFS Unit at Lethbridge

Squirrel Room



Hedgehog Room



Outside Area



The Den



Conservatory



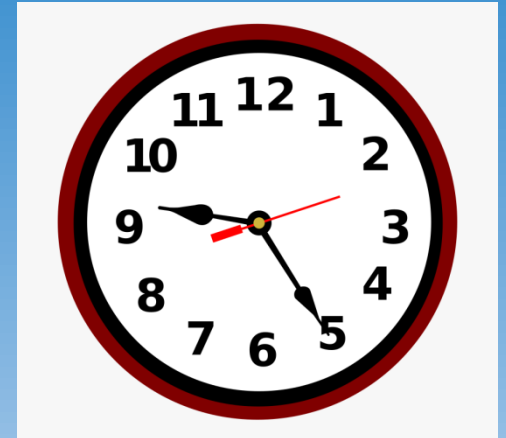
Starting School in September

At Lethbridge we stagger the children's start to school to ensure a smooth transition and to support the settling in process.

You will receive a letter in Term 6 containing your child's specific start date/times for Term 1.

Typical School Day - Full time Timings

- Doors open at 8.45 am
- Lunch :- 12-1pm
- School finish time :-
 - Monday to Thursday -3.10pm
 - Friday 1.30pm finish



Typical Daily Routine

- *Self registration
- *Early Morning Task
- *Registration/timetable/calendar
- * Phonics
- *Activities in areas (Free flow/Housepoint group, Free play/Structured play)
- Drink time / Snack time
- * Play time
- *Whole class inputs
- * Activities in areas (Free flow/Housepoint group, Free play/Structured play)
- Lunch
- * Star of the day
- * Reflection & quiet time using stories songs
- *Activities in areas (Free flow/Housepoint group, Free play/Structured play)
- Play time
- * Story
- * Home time



Snack



- Everyday the children are provided with a healthy mid morning snack.
- We are part of the national scheme which provides a piece of fruit or vegetable per day for each EYFS and KS1 child in the school. All children are encouraged to try fruits and vegetables they may have not eaten before
- Every child will be offered a drink either water from their own named water bottle or milk, which is provided until your child turns five.



House Point Groups



- At Lethbridge each child is put into one of four house point groups.
- Lions, Bears, Eagles and Wolves
- This is a positive reward system used throughout the school and is also important for our sense of community.
- We also use House point groups as a way to mix the children when we are exploring the Early Years Unit and for activities like Sports Day

Early Years Behaviour System

At the beginning of the year we make all children aware of the golden rules and expectations of behaviour. We agree and share these class rules, displaying for all to see.

We are strong believers in reinforcing good behaviour, using positive language to communicate and we also use a number of strategies to support the development of behavioural expectations. We have an abundance of certificates, stickers and general praise for the children. We try to catch children making good choices in order to praise them and in turn encourage positive behaviour.

We also have a behaviour display – all children begin the day on the Sun ☺ Throughout the day positive behaviour is recognised and celebrated by moving the child's name to a rainbow.



School Uniform



- **NAVY blue** sweatshirt, jumper or cardigan. The school logo version is available online. No other logos are permitted. Zip style tops or fleeces may **not** be worn in class.



- **White polo shirt.** The school Logo version is available online.



- **Black smart trousers**, shorts, skirts or pinafore dresses. Jeans or jean style trousers may **not** be worn.

- Tights should be plain black.



- In warmer weather, children may wear blue and white checked school dresses.

<https://www.yourschooluniform.com/>

- **School shoes have to be plain, flat and black.** Trainers, canvas shoes or open toe shoes or sandals may not be worn. Logos on footwear are **not** permitted.



- **School Book back** can be also be purchased online from [yourschooluniform.com](https://www.yourschooluniform.com). *Back packs do not fit on the pegs*

<https://lethbridgeschool.org.uk/parents/policies/UniformPolicy.pdf>

Physical Education

P.E is usually takes place on a Friday in EYFS.
This will be confirmed in September.

P.E. Kit:

- Velcro **trainers**. Younger children may wear daps if they wish.
- Socks
- **Black shorts**
- **Plain white t-shirt**

In colder weather, a plain dark sweatshirt or fleece and dark tracksuit trousers with no logos may be worn.

Football kits are **not** allowed.

Please label **all** clothing including shoes and coats with your child's name.

Please send the following items into school everyday:-

- Book bags - these need to be labelled clearly with your child's name
- Reading Record and Book – this will be given out in Term 1.
- Appropriate coat/raincoat – we go out in all weathers!



A named water bottles will also need to be sent into school everyday.

School Lunch

All children in EYFS, Year 1 and 2 are entitled to a **free school meal**.

At Lethbridge our healthy and nutritious school meals are cooked or from Aspens. Aspens are a specialist in providing catering to schools and colleges. There is always a choice of cooked meals or sandwiches, more information about Aspens and a sample menu can be found here:

<https://lethbridgeschool.org.uk/downloads/meals/Aspens.pdf>

Choosing and ordering a meal for your child is very simple and convenient. It is all done online through Aspens own ordering system . More information about how to do this simple process will be sent to you once your child has started school.



Packed Lunch

At Lethbridge we are proud to have been awarded Healthy Schools status and are eager for all children to eat a healthy, balanced diet. We therefore request that you provide your child with a healthy lunch box .

The Lunch box must be named

We are a **nut free** school. However products which say '*may contain traces of nuts*', are acceptable.

Below are some useful websites for ideas

<https://www.bbcgoodfood.com/recipes/collection/school-lunch>

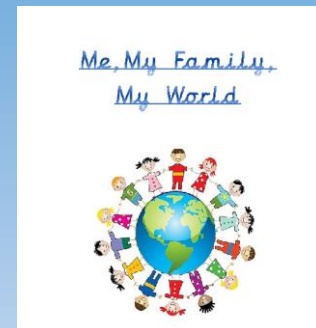
<https://www.supersavvyme.co.uk/family/kids/smart-sandwiches?gclid=CJbOutm87M8CFVW4Gwodv-UB5g>

<https://www.parents.com/recipes/familyrecipes/lunch/healthy-school-lunches-snacks/>



Term 2

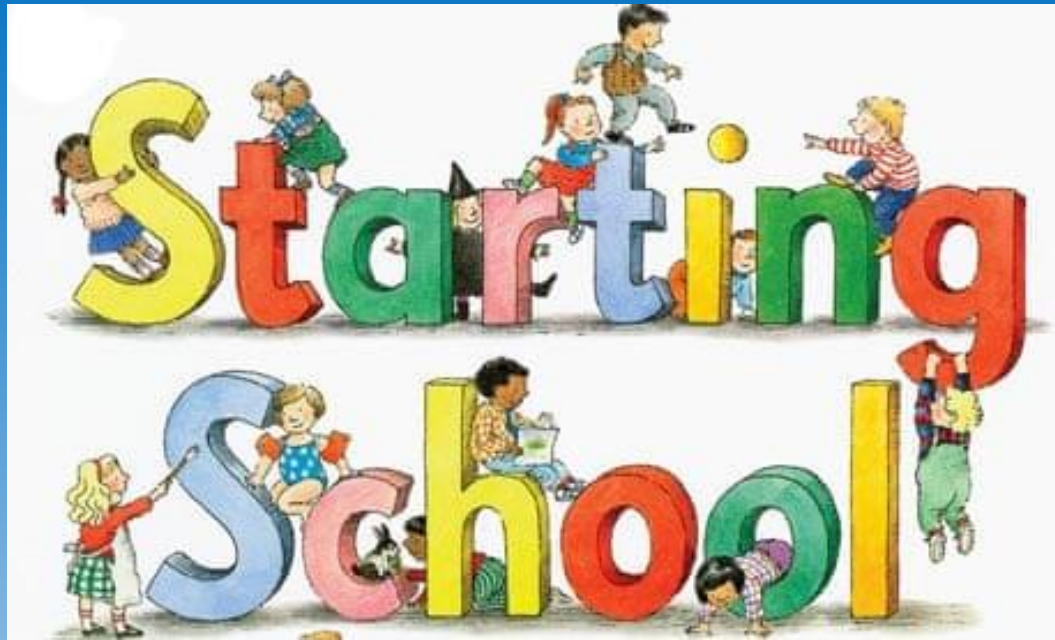
- **Stay and Play Sessions** – you will be invited to attend these informal play session at the start of the day every other Friday.
- **Class Teddy & Scrap Book** – every child will have the opportunity to take this home over a weekend or holiday. You will need to help your child record what you have done with teddy and return to school. Your child will then share their adventures with the rest of the class.
- **Me, My Family, My World Books** – these are sent home twice a term with activities for your child to complete with help of a family member. Every child will be given the opportunity to share these books once returned to school.
- **Phonic folders** – these will be sent home at the beginning of term and need to stay at home. Each week we will put four sounds in your child's book bag, you will then need to file them into this folder and practise recognising these sounds regularly with your child.



Other Important Information

Going home – You **must** let the class teacher know if it will be someone different. If on a regular basis please note on the contact sheet.

Medicines– we accept prescription only, clearly named, medicines in the original packaging. This needs to be checked in through the school office.



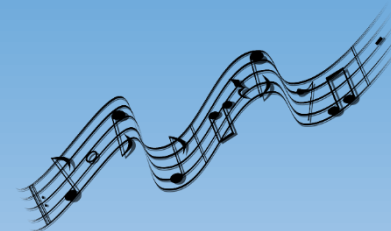
Starting School is a new adventure and there are lots of things you can do to help your child get ready.



Preparing for school



1. Read to your child daily and talk about what you've read.
2. Sing rhyming songs and do finger plays.
3. Counting songs e.g. '5 little ducks'
4. Counting stairs
5. Recognising door numbers
6. Put your child's name on their clothing and toys to help him or her recognise their name in print.
7. Practise getting dressed and undressed.
8. Practise going to toilet independently.



See the school New Starter Web page for many more ideas and useful links.

<https://lethbridgeschool.org.uk/newStarters.php>



How can you support your child when they have started school ?

- **Wow moments** - Collect evidence at home and send it into school. This will then be put towards your child's learning profile.
- Regularly check **parent mail** for emails and **book bags** for letters about trips, meetings and requests.
- **Read and share books** with your child at home every day.
- In term 2 begin to **practice sounds and reading keywords** by sight.
- Become a parent helper.



(Please see the EYFS Curriculum page in the new school year for more information)

Date for the diary

Parent/child transition visit to
meet your teacher and visit
your new room.

Monday 11th July – am

(allocated time slot sent out T6 Week 3)